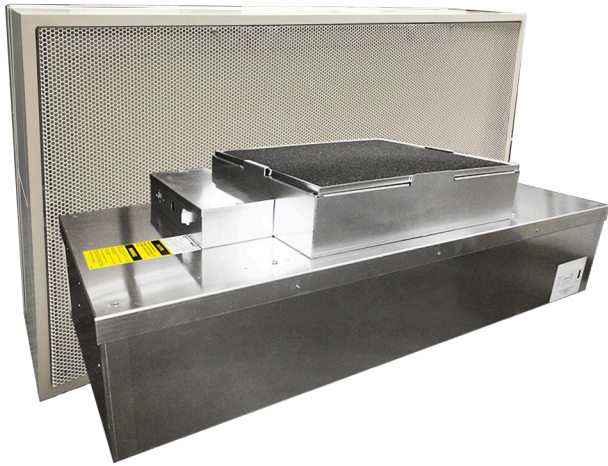


BioMAX™ Fan Filter Unit

FFU for Critical Clean Air Environments



FEATURES

99.99% efficient @ 0.3 micron HEPA filter

Solid state speed controller

Washable MERV 4 prefilter for easy maintenance

Low sound, watts and operating costs

Manufactured to IEST recommended practices

P MOTOR TYPE

Forward-curved centrifugal fan

E MOTOR TYPE

Backward-inclined centrifugal fan

BioMAX Fan Filter Unit

Combining low sound, low watts and profile, the Koch BioMAX fan filter unit provides one of the lowest sound levels of any FFU in the industry measuring at 51 dBA.

The BioMAX fan filter unit uses less energy than older, traditional fan filter units which lowers operating costs. Units with the P motor type run at only 310 watts at 90 FPM, while the E motor type runs at 90 watts at 90 FPM. Available in 2x2 and 2x4 sizes, all units are UL listed and have a mill finished aluminum exterior.

The BioMAX FFU can help provide opportunities to earn LEED points with its many energy-saving features. Note: LEED (Leadership in Energy and Environmental Design) is the rating system of US Green Building Council by which building designs are certified.

Typical Applications

The Koch BioMAX fan filter unit is primarily used in critical environments requiring clean air solutions:

- cleanrooms
- pharmaceutical compounding
- semiconductor
- microelectronic manufacturing
- healthcare

Housing Styles

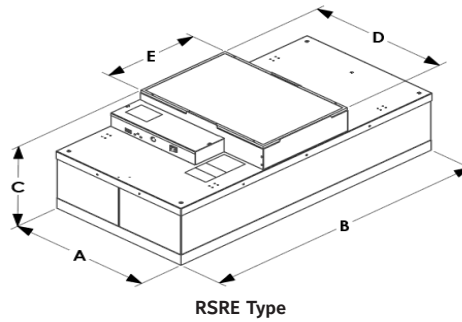
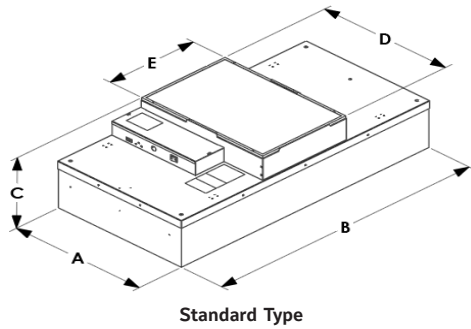
BTR

Standard filter. Filter is replaced from above the ceiling.

RSR

Roomside removable motor and filter. Filter and motor replaced from below ceiling.

BioMAX FFU Dimensions and Performance Data



Product Code	Nominal Unit Size	Dimensions AxBxCxDxE (mm)	Filter Type	Active Filter Face (Sq. Ft.)	Max CFM	CFM @ 90 FPM	Motor Type	Watts @ Max CFM	Watts @ 90 FPM	Sound dBA @ 90 FPM	Unit Weight	Finish
P Motor Type												
FFUSTND-235235-MW-115P-HEPA	2x2 Standard	23.63" x 23.63" x 12.51" x 23.25" x 16" (600 x 600 x 318 x 591 x 406)	HEPA	3.5	410	315	115 PSC	200	165	41	41	Mill Finish w/ White Diffuser Screen
FFURSRE-235235-MM-115P-HEPA	2x2 RSRE	23.63" x 23.63" x 14.62" x 23.25" x 16" (600 x 600 x 371 x 591 x 406)	HEPA	2.3	350	210	115 PSC	170	140	48	44	Mill Finish
FFUSTND-235475-MW-115P-HEPA	2x4 Standard	23.63" x 47.63" x 12.51" x 23.25" x 16" (600 x 1210 x 318 x 591 x 406)	HEPA	7.2	660	650	115 PSC	315	310	51	66	Mill Finish w/ White Diffuser Screen
FFURSRE-235475-MM-115P-HEPA	2x4 RSRE	23.63" x 47.63" x 14.62" x 23.25" x 16" (600 x 1210 x 371 x 591 x 406)	HEPA	5.2	610	470	115 PSC	300	245	51	71	Mill Finish
E Motor Type												
FFUSTND-235235-MW-115E-HEPA	2x2 Standard	23.63" x 23.63" x 16.42" x 23.25" x 16" (600 x 600 x 417 x 591 x 406)	HEPA	2.3	350		115 ECM	130	50	46	44	Mill Finish w/ White Diffuser Screen
FFUSTND-235475-MW-115E-HEPA	2x4 Standard	23.63" x 47.63" x 14.32" x 20" x 20" (600 x 1200 x 364 x 508 x 508)	HEPA	7.2	950	650	115 ECM	250	90	52	66	Mill Finish w/ White Diffuser Screen
FFURSRE-235475-MM-115E-HEPA	2x4 RSRE	23.63" x 47.63" x 16.42" x 20" x 20" (600 x 1210 x 417 x 508 x 508)	HEPA	5.3	850	477	115 ECM	240	65	47	71	Mill Finish
FFURSRE-235235-MM-115E-HEPA	2x2 RSRE	23.63" x 23.63" x 16.42" x 23.25" x 16" (600 x 600 x 417 x 591 x 406)	HEPA	2.3	350	210	115 ECM	130	50	46	44	Mill Finish

Notes:

Performance tested in accordance with the (ANSI/AMCA 210-07), (ANSI/ASHRAE 51-07) test standards for Certified Aerodynamic Performance Rating. Max CFM rating based on free air volumes @ high speed motor setting. 90 fpm values based on active filter face area. BTU = Watts x 3.413

BioMAX FFU Electrical Info:

P motor type: 115V, 60HZ 1 Phase = 3.3 F.L.A.

E motor type: 115V, 50/60HZ 1 Phase = 2.9 F.L.A.